

TRUMBULL ROAD
1029.60 (15th 60L)

2640

400-070
64.00 A

2640±
2610.64

657'

400-060
Floral Gardens Cemetery Assn.
70.85 A

400-030-02
15.95 Ac

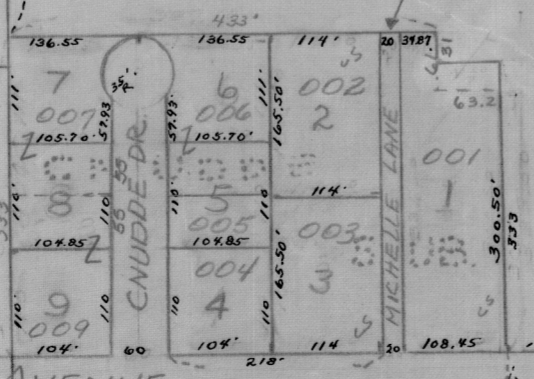
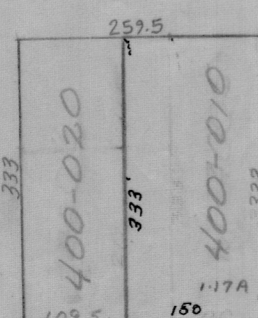
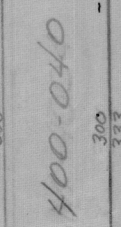
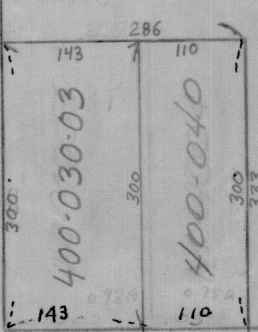
1001
970

Scale: 1"=200'

TRUMBULL ROAD

262'

1584'



Lot 1294

CASS AVENUE 511.00

AVE ROAD

09-130-034-400

S.E. 1/4 SECTION 34
T.14N. R.5E.